

CADSTAR Installation Guide

Part No: 202561/17

Disclaimers

Copyright/disclaimer for manuals

© Copyright 1995/2014 Zuken Limited all rights reserved.

Warning! DO NOT COPY

Copyright in the whole and every part of this manual belongs to Zuken Limited and may not be used, sold, transferred, copied or reproduced in whole or in part in any manner or in any media to any person, without the prior written consent of Zuken Limited. If you use this manual you do so at your own risk and on the understanding that neither Zuken Limited nor its associated companies shall be liable for any loss or damage of any kind.

CADSTAR and P.R.Editor are a registered trademarks of Zuken Limited.

Microsoft is a registered trademark, and Windows and the Windows logo are trademarks of Microsoft Corporation.

All trademarks are hereby acknowledged.

Table of Contents

Installation Guide.....	5
The Installation Tasks.....	5
Installing CADSTAR.....	5
Setup for Licensing Information.....	6
Specifying The Destination Of The Installation.....	7
Setting The Type Of Installation.....	8
Installation Of The Files.....	9
Exiting From The Installation.....	11
Result Of Installation.....	12
Repair, Modify or Remove CADSTAR.....	14
Installing the Software Key Driver.....	15
Setting Up The Type Of Installation.....	16
Software Protection	18
Overview.....	18
Software key.....	19
Obtaining the license.dat File.....	19
Finding out the Serial Number of your Key.....	19
Sending E-mail to your Distributor.....	19

The Installation Tasks

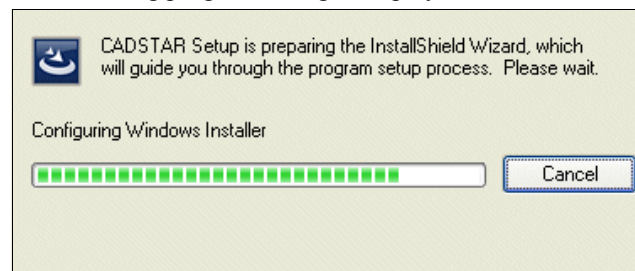
- First, install the CADSTAR Software.
- Then, if necessary, install the software key driver. If you are a **new user** this is an essential procedure. A software key driver is not required for a network licensed system.
- Finally carry out the **Authorisation** Procedure. Not required for a network licensed system.

Installing CADSTAR

To install CADSTAR:

1. Download and open the installation exe.

The following progress dialog is displayed:



It informs you that the Installation Wizard is being run up.

If you are attempting to install onto an unsupported operating system, the following dialog will be displayed:



You need to upgrade to Windows XP or later to continue the installation. Note that CADSTAR is no longer supported on Windows XP by Zuken although the installation will succeed.

Each prompt displayed during the process tells you what it is about to do and prompts you to either continue with a **Next** button, or to exit from the installation with a **Cancel** button.

The first installation dialog is:



This welcomes you to the installation process.

2. Click **Next**.

The next dialog displays the **License Agreement**, which you should read carefully:

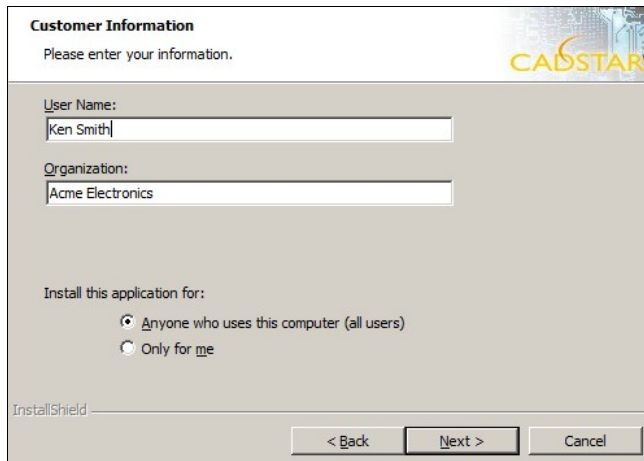


If you accept the terms of the License Agreement:

3. Click on **I accept the terms of the License Agreement**.

4. Click **Next**.

On the next dialog you enter your personal name and company name:



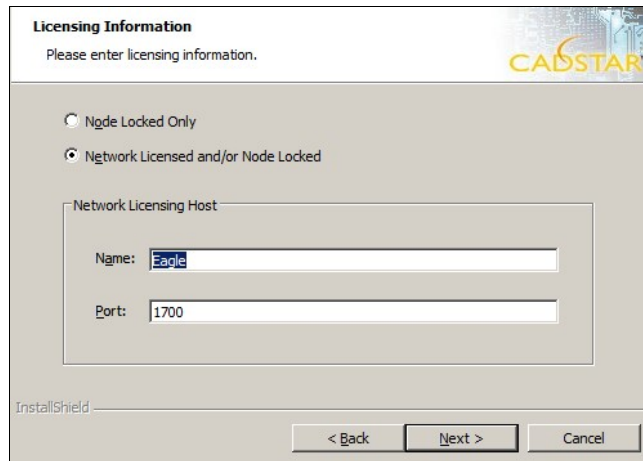
5. In the **User Name** box enter your own name (or the name of the machine if you prefer), and in the **Organization** box enter the name of the organization you work for.

These two items of information will be displayed on the dialog obtained by the **About CADSTAR** option (on the **Help** menu).

6. If given the option, choose whether to install CADSTAR for all users or just for the current user.

Setup for Licensing Information

On the next dialog you choose the style of licensing:



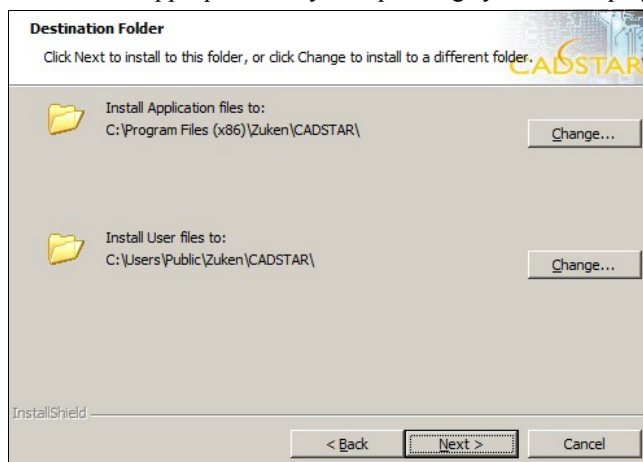
7. Choose either **Node Locked Only** or **Network Licensed and/or Node Locked**. If you choose **Network Licensed** you must also enter the **Name** and **Port**. Then click **Next**.

- **Node Locked** - is for specifying that you are installing a 'stand alone' system which can only be used with one particular software key.
- **Network Licensed** - is for specifying that you have installed 'network licensing' software on an external server (host) and wish to communicate with this server. (Network licensing is explained in the guide provided for that software). This button displays a dialog which creates the link from your system to the terminal on which the network licensing software is installed.
- **Name** identifies the machine on which the network licensing software is installed.
- **Port** is a number that is set up when the network licensing software is installed.

You should be able to obtain name and port from the network licensing system.

Specifying The Destination Of The Installation

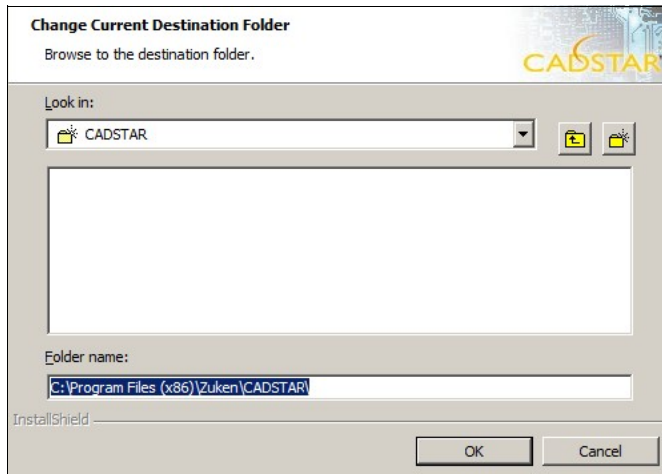
The next dialog enables you to specify which folder CADSTAR will be installed in. A default appropriate for your operating system is displayed:



If you wish to change the destination of either the application files or user files from the default:

8. Click on the appropriate **Change** button.

A new dialog is displayed ready for you to select the directory you require:



In the example above, it is set up to install the software in the **default** directory. The DLLs that make up CADSTAR will be installed in a sub-directory, automatically generated, called **Programs**.

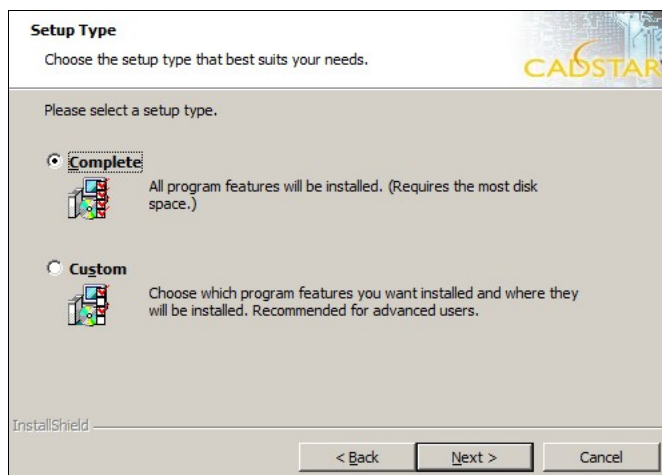
9. *Browse the folder tree or type in a directory path into the **Folder Name** edit control and click **OK**.*

The Choose Destination Folder dialog is displayed again. If you are happy with the directory in which CADSTAR is to be installed:

10. *Click **Next**.*

Setting The Type Of Installation

The next dialog asks you what type of installation you require:

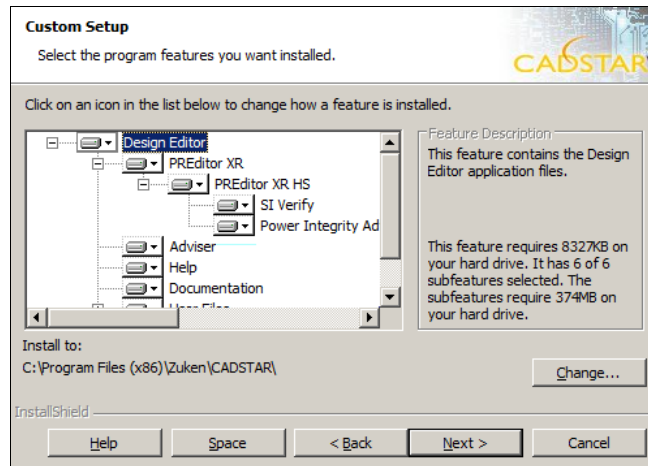


11. *Select either **Complete** or **Custom** and click **Next**.*

Complete - is for installing all the possible CADSTAR applications.

Custom - is for installing selected parts of the CADSTAR suite.

12. *If you have selected **Custom** you must choose which components to install.*



Select an item from the feature tree to see a description. Sub-items can only be installed if the root items are installed too. For instance you cannot install SI Verify without installing P.R.Editor XR.

Note: The Design Editor includes editors for: Schematic Design, PCB Design, Schematic Symbol, PCB Component, Documentation Symbol and Library Editor.

Change – Enables you to change the Install to directory. This is the same dialog that is documented above.

Help – Brings up a description of the icons in the feature tree.

Space – Displays a dialog showing how much free space you have on each of your drives.

13. Choose which applications and features you wish to install.

If you are uncertain whether the installation will fit on the current drive:

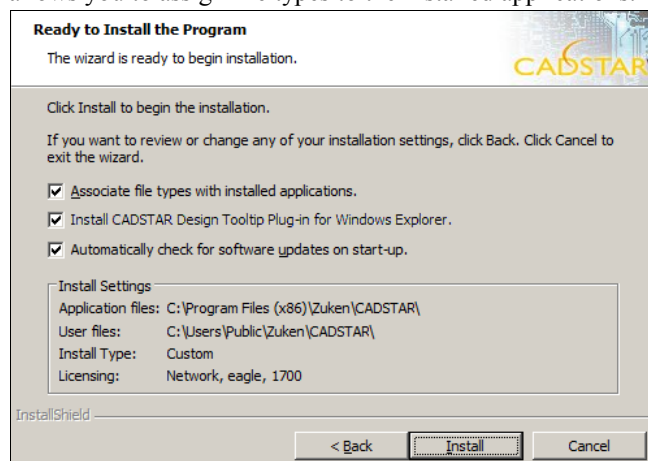
14. Click **Space** then, if required, click **Change** to amend the install path.

Alternatively remove applications and features to be installed until you have enough drive space.

15. Click **Next** when ready.

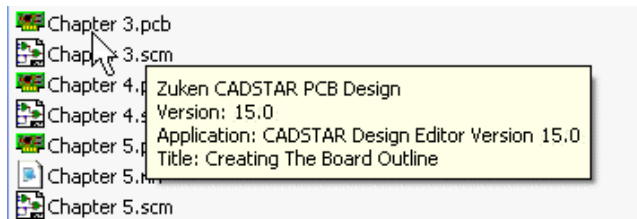
Installation Of The Files

The next dialog gives a summary of the parameters you have set up so far, and allows you to assign file types to the installed applications.



16. If you do not wish to associate file types to the new applications Deselect the **Associate file types...** option.

17. The CADSTAR Design Tooltip Plug-in allows the Windows Explorer tooltip to display the version and patch number for design files.



If you do not want this feature, deselect the **Install CADSTAR Design Tooltip Plug-in** option.

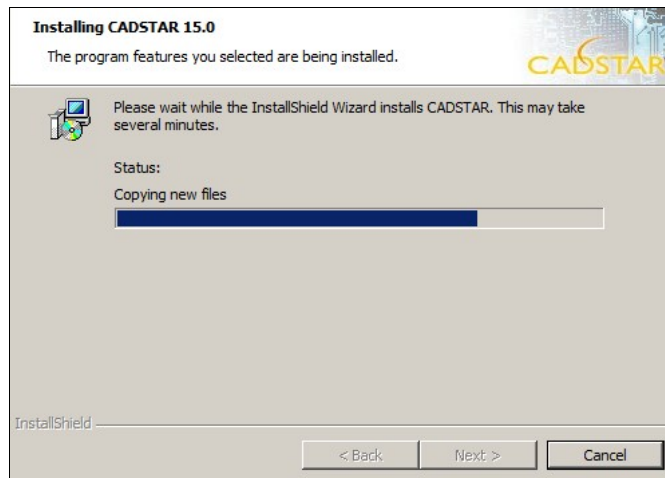
This feature is not available in 64 bit versions of Windows

18. If you do not want CADSTAR to automatically check for new versions of the software, deselect the **Automatically check for software updates...** option.

Check the summary. If you are happy for the installation to proceed:

19. Press the **Install** button.

The installation now commences. A dialog displays progress information:



When the installation is complete you are given the option to view the **What's New** help pages:



View the What's New file is automatically selected. When you click Finish you will be presented with a Help window which describes all the new features in this current version of CADSTAR. Deselect this option if you do not wish to view the What's New help file.

20. If you do not wish to view the **What's New** file, deselect the checkbox.

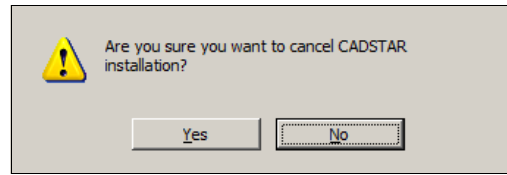
21. Press **Finish** to complete the installation wizard.

Exiting From The Installation

If you wish to exit from the installation before it is complete:

22. Click *Cancel* on the progress dialog.

The following dialog is then displayed:



23. Click *Yes*.

Result Of Installation

A set of application icons is created inside the CADSTAR folder in the computer's Start menu. Depending on OS, this is obtained by pressing the Start button to display the **Programs** menu or the **Apps** category. It will display the icons appropriate to the software you have installed.



This icon runs up the CADSTAR software, which allows you access to the CADSTAR programs (i.e. Schematic Design, PCB Design, Schematic Symbol, PCB Component, and Documentation Symbol).

Design Editor



This icon runs up an editor, which enables you to create and edit parts libraries. It also enables you to edit the contents of the Symbol and Component libraries.

Library Editor



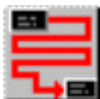
This application is relevant to existing users who are updating from earlier versions of CADSTAR. It enables you to transfer the settings from your previous installation into the new version.

Migrate Tool



This icon runs up the P.R.Editor software for component placement and route editing. It accepts designs from CADSTAR in the RIF format within a controlled directory structure.

P.R.Editor XR



This icon runs up the P.R.Editor software for High Speed route editing. It accepts designs from CADSTAR in the RIF format within a controlled directory structure.

P.R.Editor XR
HS



This option runs up SI Verify. With this tool you can:

- Easily check key high-speed parameters such as characteristic impedance in a spreadsheet.
- Simulate your physical design with high accuracy to minimise bad prototype builds.
- Verify proposed high-speed topologies before implementation to make your design correct by construction.

SI Verify



Simulation
Library
Manager

This icon runs up the Simulation Library Manager for use with High Speed routing. The Simulation library contain Models that simulate the behaviour of pins on parts, thus enabling the P.R.Editor XR HS to calculate Overshoot and display the correct pin symbols on the Tree View in the Constraint Manager.



Sweeper

Only useful if you use SI Verify or P.R.Editor XR HS. It is advisable to run Sweeper before uninstallation of these applications or if you encounter problems with closing either of them. Sweeper scans your system and removes any processes that have not properly closed.



Constraint
Browser

This icon runs up the Constraint Browser software. This can be used to set constraints and net topologies for schematic designs.



User Notes

This icon displays informative notes, hints and tips, and extra information not included in the on-line Help.



What's New

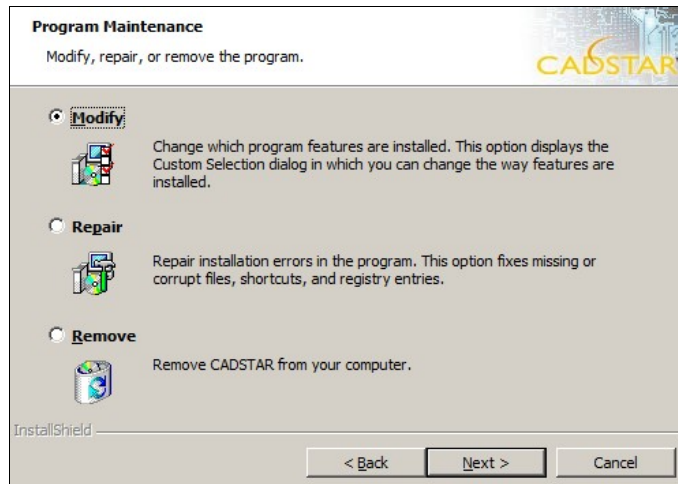
This icon displays a description of the new features in the release of software you have just installed.

Repair, Modify or Remove CADSTAR

If after installation you wish to add or remove CADSTAR components you can do so from the **Control Panel->Programs and Features**. This option is also useful for repairing your CADSTAR installation if it becomes corrupt or stops working.

1. Select **CADSTAR** and click **Change**.
2. Click **Next** on the initial welcome screen.

The following dialog is displayed:



3. Choose whether you wish to **Modify**, **Repair** or **Remove** CADSTAR and click **Next**.

Modify brings up the Custom dialog. For details see step 11 in Installing CADSTAR above.

Repair scans your installed CADSTAR files and repairs any that have become corrupt or are missing.

Remove completely removes the CADSTAR installation.

Another wizard page will appear.

4. To continue press the relevant button, **Install** or **Remove**.

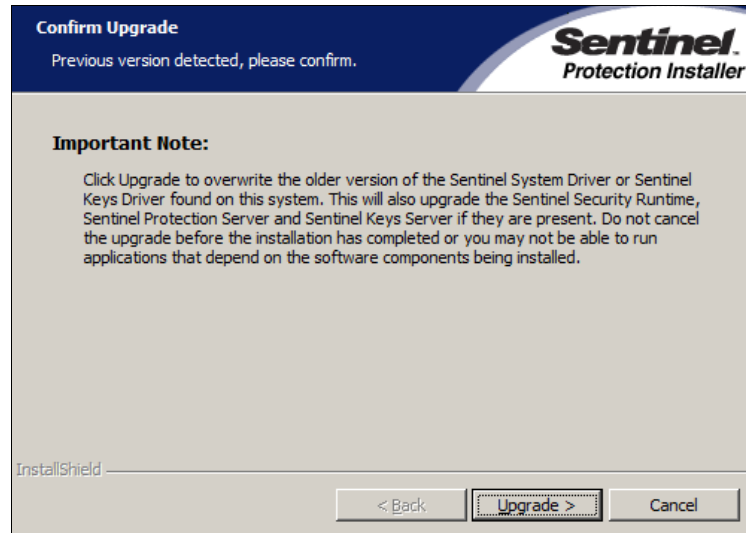
Installing the Software Key Driver

This procedure is for installing the driver which enables the protected applications (i.e. Design Editor, Library Editor, and Route Editor) to communicate with their respective Software keys.

It is essential that you install the Software Key.

1. *Open the sentinel driver exe.*

If you are an existing user with an old version of the driver, the following dialog is displayed:



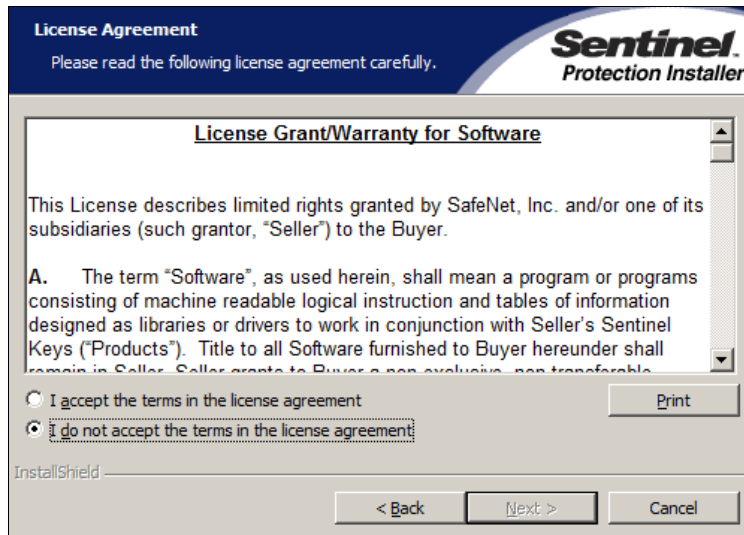
2. *Click **Upgrade** to continue with the installation.*

An introduction to the Installation Wizard is now displayed:



3. *Click **Next**.*

The next dialog displays the **License Agreement**, which you should read carefully.

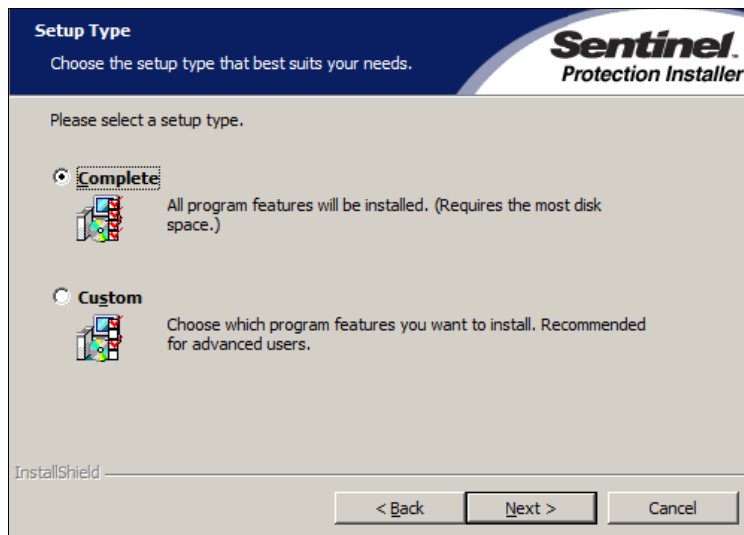


If you accept the terms of the License Agreement:

4. Click ***I accept the terms in the license agreement*** and then ***Next***.

Setting Up The Type Of Installation

The next dialog asks you what type of installation you require:



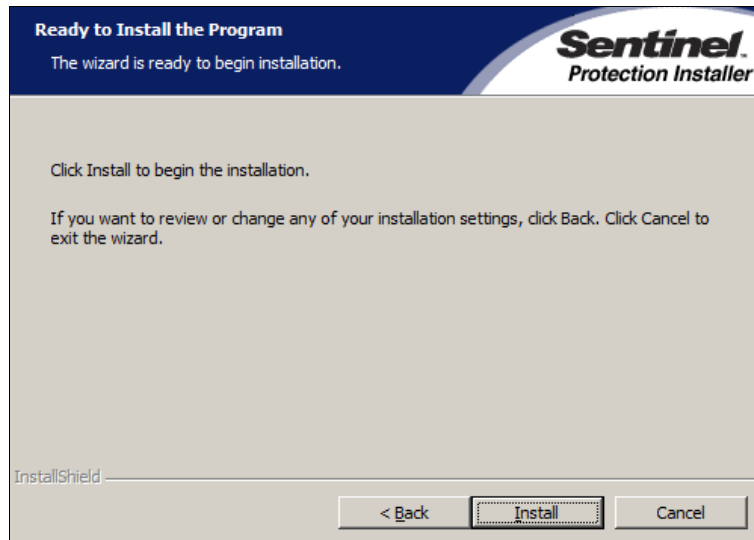
Complete - for installing the drivers for both **Parallel** Port keys and **USB** port keys.

Custom Install - for selecting whether you install the driver for a **Parallel** port key or a **USB** port key.

It is recommended that you choose a Complete installation:

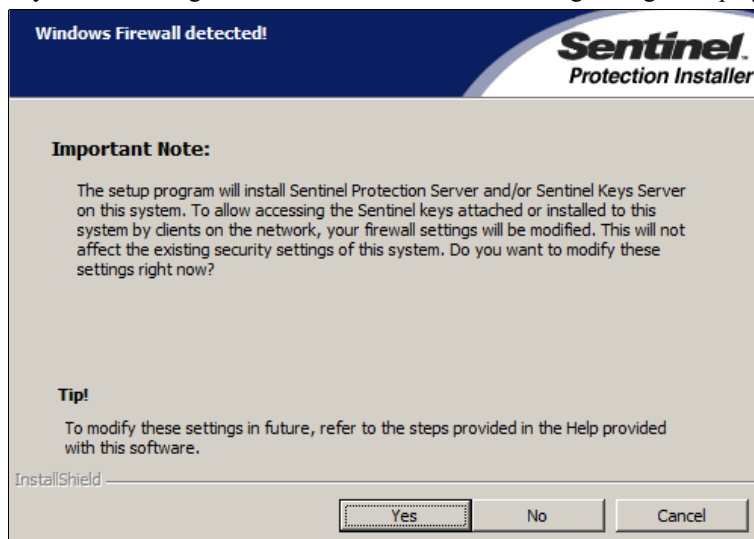
5. Select ***Complete*** and then Click ***Next***.

The next dialog informs you that the installation of the Driver is about to start:



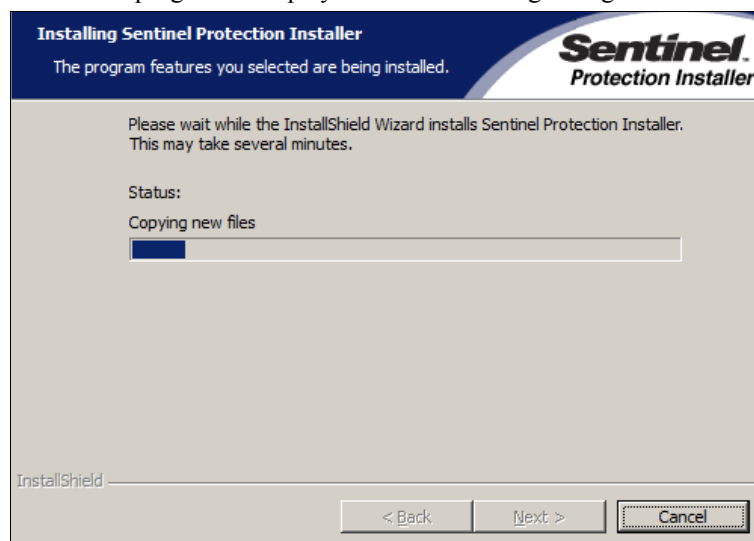
6. Click the **Install** button.

If you are running a **Windows Firewall** the following dialog is displayed:

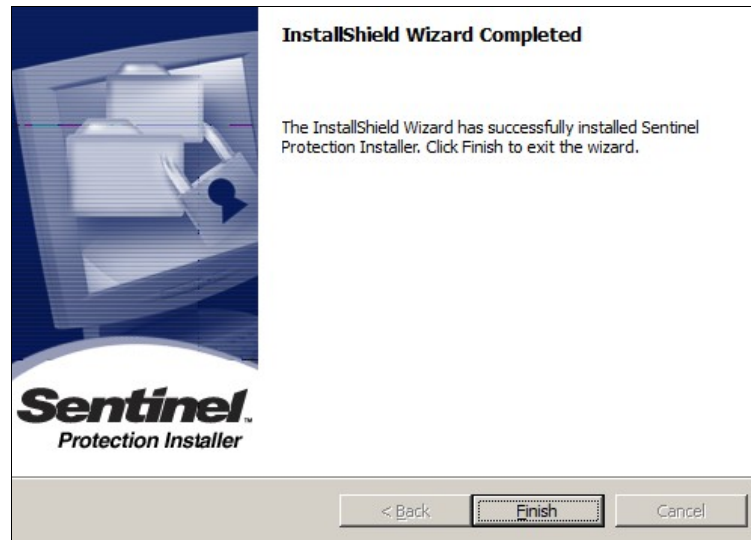


7. Click **No**.

Installation progress is displayed on the following dialog:



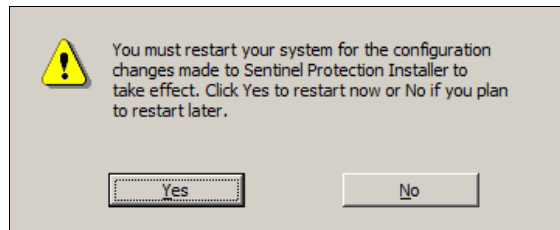
When installation is complete, you are informed by the following dialog:



To exit from the Installation Wizard:

8. Click the **Finish** button.

You may obtain the next dialog (it depends on your operating system):



If you wish to continue using the newly installed Driver:

9. Click **Yes**.

You are now ready to continue on to the next stage of the installation if appropriate.

Software Protection

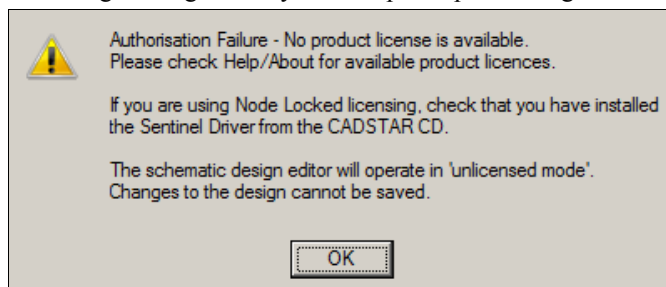
Overview

Zuken Limited reserves the copyright on the software and prohibits the duplication of the software for use on other PCs simultaneously.

For all users - except those in a Network Licensed system - the software is protected by:

- A **Software Key** (a physical item that is plugged into your computer).
- A **license** for that key (stored in a file called **license.dat**).

If the Software Key or the license.dat is not installed, CADSTAR outputs the following message when you attempt to open a design:



When you Click OK to proceed, the system starts up the software, but in the **Unlicensed** mode where you are restricted to a small number of components and pins.

Software key

The Software Key is provided with your software.

It must be plugged into a **USB** port on your computer before you can use fully functional CADSTAR software.

Obtaining the license.dat File

A **license.dat** file is obtained from your Distributor by E-mail (refer to the following procedure on how to do this).

Finding out the Serial Number of your Key

First you will need to know the number of your Software Key in order to obtain the file. To find this out:

1. **Plug the Software Key into a USB port on your computer.**

If you have two keys (e.g. one for PCB Design and one for P.R.Editor XR) you need to process **each key separately**.

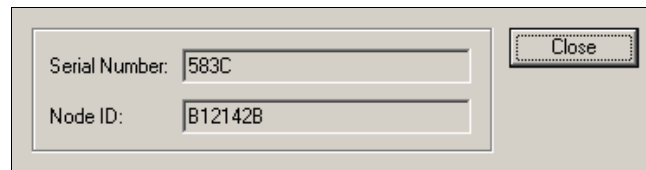
2. **Run up CADSTAR.**

3. **Select the *About CADSTAR* option on the *File>Help* menu.**

On the dialog displayed:

4. **Click the Software Key Details button.**

The Serial Number and ID of the node in which it is plugged are displayed. For example:



Serial Number:	583C
Node ID:	B12142B

Close

The Serial Number and Node ID need to be quoted when obtaining your license file.

5. **Make a note of these two numbers before closing the dialog.**

Sending E-mail to your Distributor

If you are connected to the World Wide Web, you can automate this process using the CADSTAR website:

6. **Drop the *Help* menu again and then select *CADSTAR Online*.**

When the CADSTAR site is displayed:

7. **In the banner at the top of the page select the option *Services and Training*, then choose - *Request Your CADSTAR license*.**

A 'form' is displayed, ready for you to enter the details which enable you to obtain the appropriate license.dat file.

8. **Complete the form, entering information in every box that requires it, and click the *Submit* button.**

If you do not have access to E-mail or the Internet, communicate your requirements to the Distributor by FAX or Telephone as normal.

When you receive the license.dat file back from your Distributor:

9. **Copy it to the *..\Programs* directory (within the CADSTAR installation path).**